

D A V I D E D W A R D[®]

DAVID EDWARD

David Edward is a family-owned furniture manufacturer celebrating their 55th year in business. We specialize in the design and manufacturing of sustainable, timeless furniture. We have a focus on classic and clean contemporary designs.

Utilizing two facilities totaling over 300,000 square feet, one in Baltimore, Maryland and the other near York, Pennsylvania. A work force of more than 300 skilled crafts people use old-world methods to create not only the standard David Edward product line but also products, under license, for other furniture marketers.

An integrated David Edward Design Studio is available to our clients along with extensive prototype capabilities. These features that David Edward brings to the seating industry facilitate exceptional design developments, and enables the company to help develop, engineer, and manufacture total custom designs for its clients.

Our company is represented throughout the United States, as well as in Europe, Asia, and the Middle East. With growing representation all across the world each and every day. David Edward and the Pitts family's philosophy has continuously been to manifest positive, unconditional regard for its customers, employees, suppliers, the environment and the community at large.

2018 COLLECTION

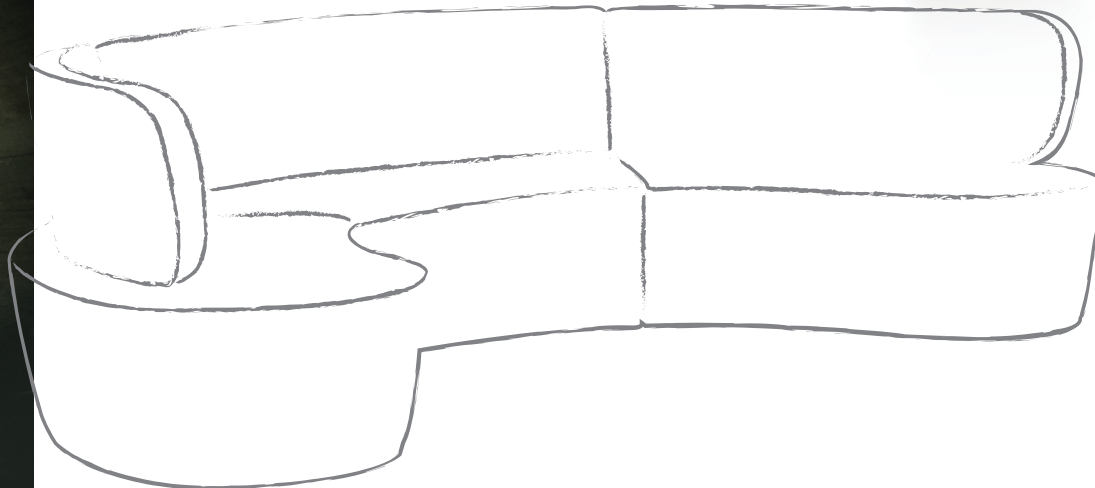
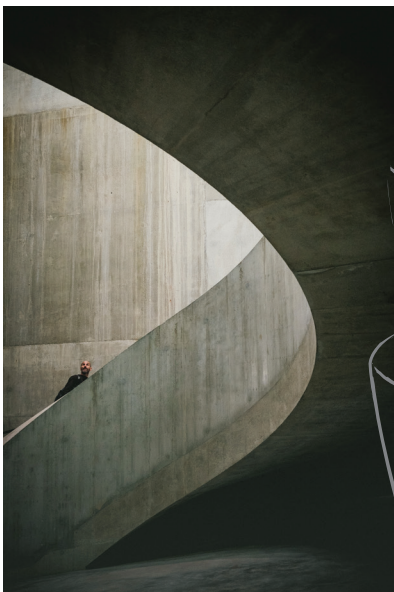
For 2018, David Edward wanted to push the boundaries on contemporary furniture and the standard we had previously set for ourselves. This new collection is the largest we have ever launched at one time in the 55 years of business. The goal of this collection was to create a wide range of products that could be the solution for various different spaces.

In the following pages, each product will be dissected and their design process will be shown. The goal of this document is to help show the roots to each product. Every piece in this collection has a special story and design background that makes it unique. But collectively they join together to form a beautiful ensemble.

ENTOURAGE

David Fox Design

Entourage, designed by David Fox, can work well individually or as part of a larger scheme. A simply detailed design, the upholstery is elevated from the floor with a delicate tubular frame. Angled yet considered lines rise in a positive direction from the base of the product, with angled supporting backs swooping around the body for comfort. Entourage can be loosely scattered as an independent sofa with stools or linked in a modular landscape for a more organized solution, either option caters to demands of a compact office or large living areas.



FIGHT CLUB

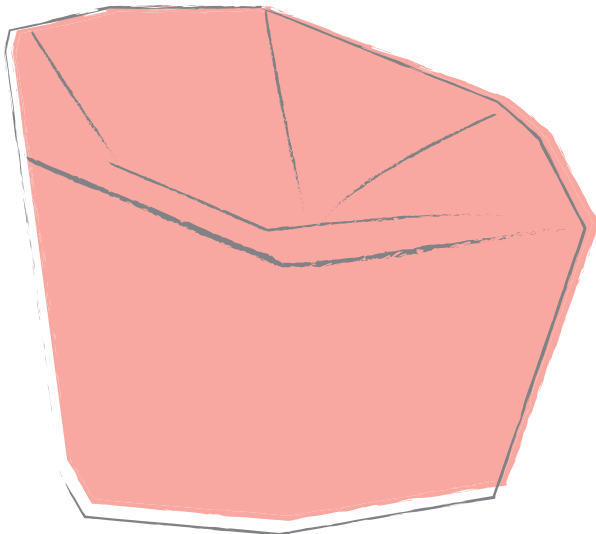
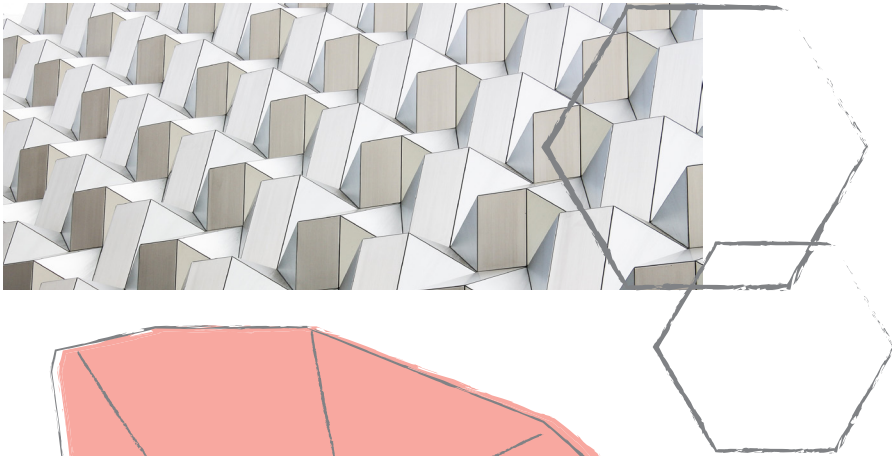
Studio David Edward

The Fight Club is a perfect mix of play and comfort. It'll be the most sought after chair in the office, it may even start some arguments. Offered in a variety of fabrics and with or without the ottoman, the Fight Club can be the hit of the office.



GEO COLLECTION

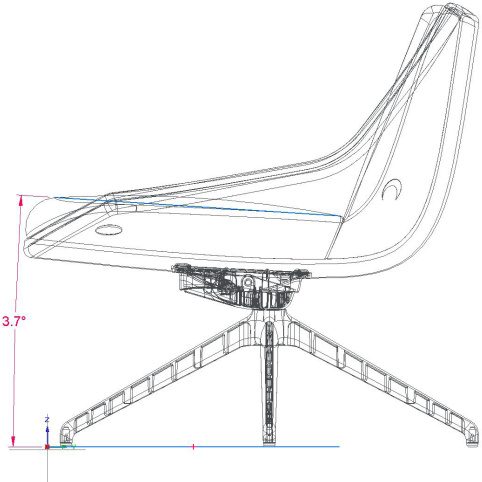
Drawing from geometry and the beautiful angles it provides, the Geo is ergonomically angled to provide both comfort and looks. By stretching this hexagon shape, two and three seats versions are created and complete the collection. Geo is a perfect choice for lounge areas, offices and hospitality spaces where colors and fun needed. The hexagonal form is the key element for this contemporary and casual but always elegant armchair. It is undoubtedly one of the most special and innovative ranges on the market.



STRATUS LOUNGE

Maxwell Moore

Inspired by nature, the Stratus Lounge is available as an upholstered shell or painted with numerous different base options. Just like a stratus cloud, the back and base of the chair are one continuous sheet and the seat feels like you're floating.



STRATUS LOUNGE

Maxwell Moore

Inspired by nature, the Stratus Lounge is available as an upholstered shell or painted with numerous different base options. Just like a stratus cloud, the back and base of the chair are one continuous sheet and the seat feels like you're floating.



KUTEE

The Kutee offers a soft seat surface and comfort, available with tablet arm and hidden casters. With different fabric and color options, the Kutee brings color, movement and life to all living spaces, from work areas to educational establishments, from homes to lounge areas. With its storage space underneath the sitting area, it can store books, magazine and personal items. It's just so cute you can't help but adore it.

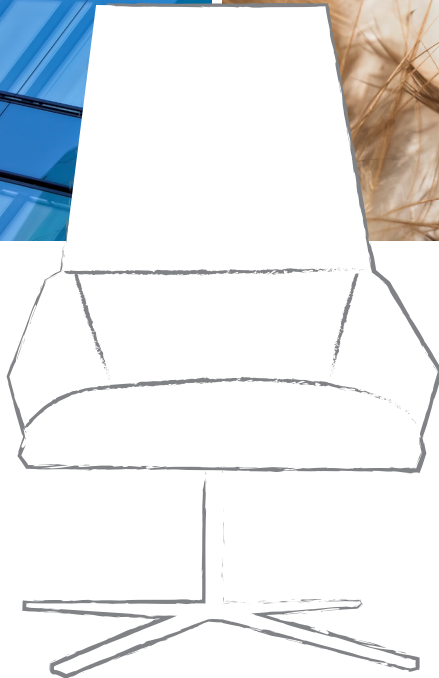


OTTO

Christophe Pillet

The Otto lounge is characterized by a minimalistic and gentle form that invites interaction between people. Otto with its low and high back versions offer a great integrity where it combines a relaxed and comfortable feeling. A design of sophisticated, stylish and sleek lines, the Otto lounge finds its place in cozy, modern spaces where one can comfortably wait, work or simply relax.

The soft yet assertive look of the Otto coffee tables make the collection complete. The different dimensions of the coffee tables are presented with a 4 star frame.



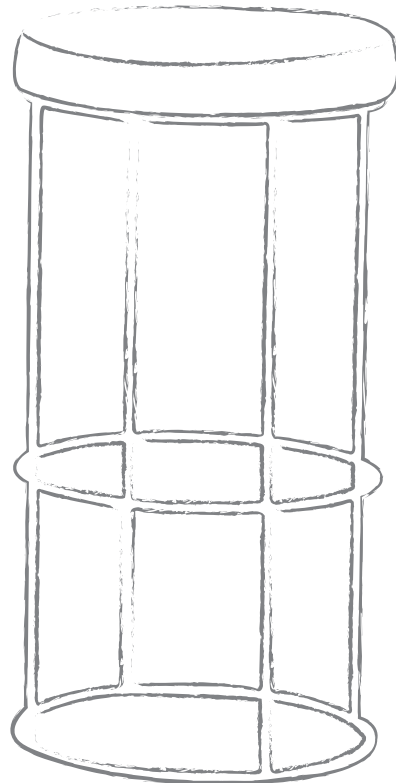
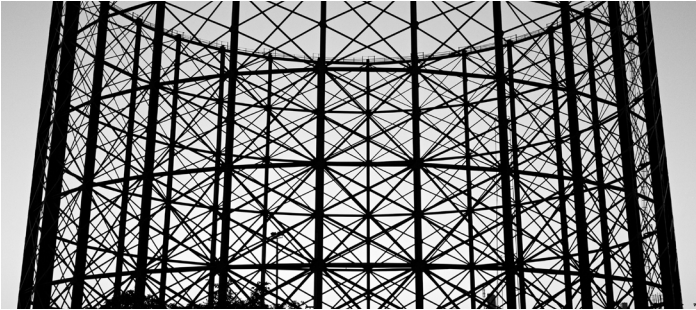
“With this collection, I wanted to design simple but “sharp” products, where the idea of Relaxing / Waiting remains a dynamic fact in opposition of Soft / Lazy / Static impression”, says Christophe Pillet.



PERCH

David Fox

The Perch bar stool is a venture into purism as it boasts well-balanced, uncluttered lines. The barstool portrays a soft gentle dome on top of the upholstered seat providing enhancing comfort. The chromed steel circles frame the upholstery, creating an open space between the steel and the floor. It resembles a bird cage and causes you to perch a top of it, like a bird.



PERCH TABLE

David Fox

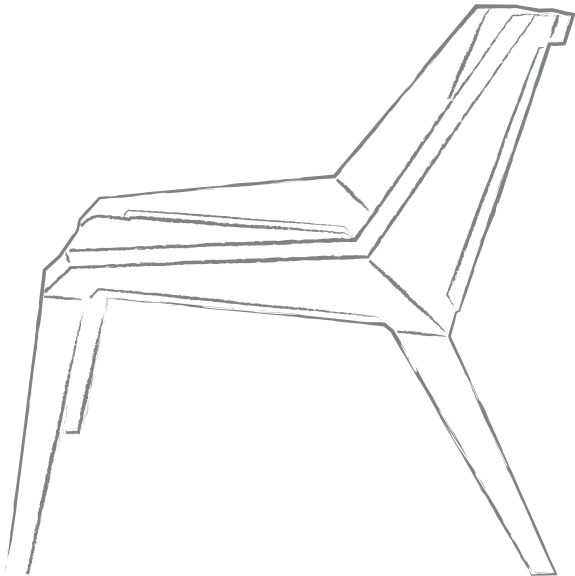
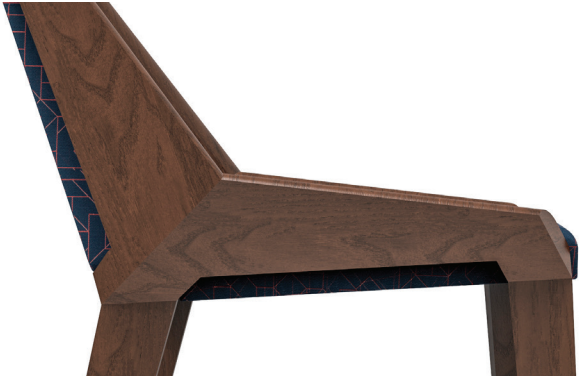
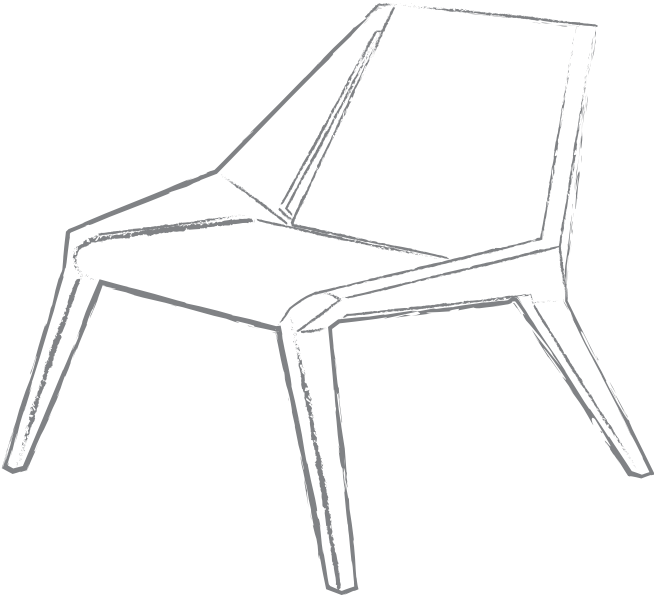
Just like the barstool, the Perch table is a venture into purism as it boasts well-balanced, uncluttered lines. It is the perfect companion for the Perch barstool and can be mixed well into almost any space. It is offered in 3 different sizes.



STEVE COLLECTION

Adam Stover

The Steve Lounge and Barstool celebrate angles that form to create a beautifully sculpted collection. The lounge offers a wide seat that you can relax in during happy hour while the barstool offers the height and comfort so that you can watch the whole game while seated.



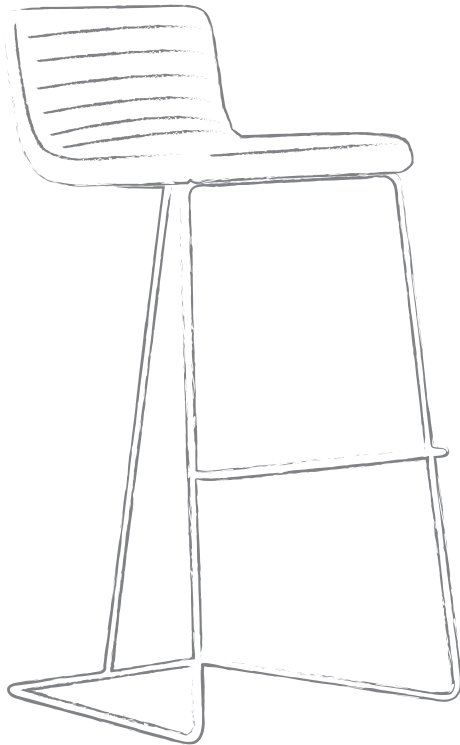
SUPERKOOOL COLLECTION

The Superkool Ottoman and Table are great additions to the already existing Superkool Chair. The iconic shape of the Superkool is enhanced with the table and ottoman additions. The completion of this collections allows it to be placed in a variety of spaces. The lounge allows for both sitting upright but relaxing as well with the ottoman close by.



TRI STOOL

The Tri Stool is easily recognized for its characteristic quilted pattern and timeless look. It's 3-pole design gives it the playfulness of a children's tricycle while still having sophistication. The sewing lines on the foam not only give the chair a refined look but also add to its comfort level.



YNOT

Zoose Design

The Ynot is a guest chair with dovetailed arm support, tight seat and back. It serves both elegance and edginess with the angles provided. It is the perfect addition to any office or dining area.

